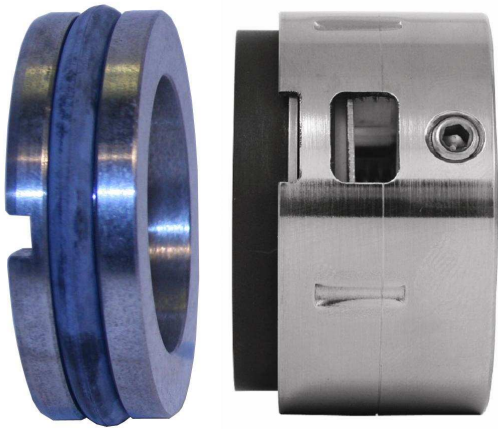
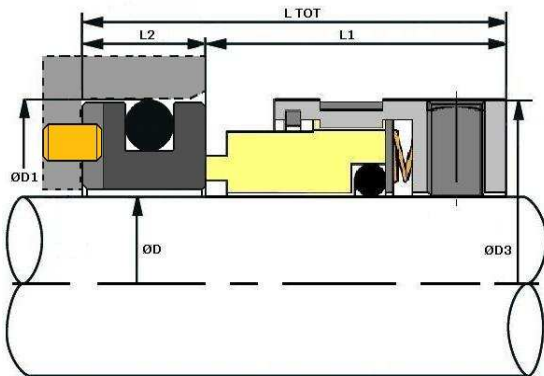




Type 1609SH



VULCAN STANDARD SIZES



Imperial Size D	Size Code	D1	D3	L1	L2	L TOT
5/8"	0158	30.95	30.70	19.10	10.32	29.42
3/4"	0191	34.15	34.70	22.20	10.32	32.52
7/8"	0222	37.30	38.10	23.80	10.32	34.12
1.0"	0254	40.50	40.50	25.00	10.32	35.32
1.1/8"	0286	47.63	43.50	26.90	11.99	38.89
1.1/4"	0317	50.80	48.30	26.90	11.99	38.89
1.3/8"	0349	53.98	52.00	28.60	11.99	40.59
1.1/2"	0381	57.15	55.60	28.60	11.99	40.59
1.5/8"	0412	60.35	61.00	34.90	11.99	46.89
1.3/4"	0444	63.50	64.30	34.90	11.99	46.89
1.7/8"	0476	66.68	65.10	34.90	11.99	46.89
2.0"	0508	69.85	70.70	34.90	13.50	48.40
2.1/8"	0539	73.05	77.00	43.00	13.50	56.50
2.1/4"	0571	76.20	79.90	43.00	13.50	56.50
2.3/8"	0603	79.40	83.10	43.00	13.50	56.50
2.1/2"	0635	82.55	86.60	43.00	13.50	56.50
2.5/8"	0666	92.10	89.60	43.00	15.90	58.90
2.3/4"	0698	95.25	92.80	43.00	15.90	58.90
2.7/8"	0730	98.43	95.50	43.00	15.90	58.90
3.0"	0762	101.65	97.70	43.00	15.90	58.90
3.1/8"	0794	101.60	100.50	43.00	19.80	62.80
3.1/4"	0825	114.30	105.30	43.00	19.80	62.80
3.3/8"	0857	117.50	108.30	43.00	19.80	62.80
3.1/2"	0889	120.65	111.50	43.00	19.80	62.80
3.5/8"	0920	123.85	114.90	43.00	19.80	62.80
3.3/4"	0953	127.00	118.00	43.00	19.80	62.80
3.7/8"	0984	130.20	121.20	43.00	19.80	62.80
4.0"	1016	133.35	124.60	43.00	19.80	62.80

Imperial shaft size, multiple spring, un-balanced 'O'-ring mounted rotary with 'O'-ring mounted seat, with axial anti-rotation pin provision.
Especially suited for medium and heavy pump duties where the media allows use of standard elastomeric compounds.

STANDARD FACE MATERIALS
Rotary Face: M825 Carbon, RB Silicon Carbide.
Seat Ring: Q1 Silicon Carbide, Q2 Silicon Carbide, Tungsten Carbide.

Suggested Operating Limits
Pressure 240psi Speed 25m/s
Temperature -100 to +200°C
Limits are dependant upon shaft size, shaft speed, temperature, and media to be sealed.